



# Contents

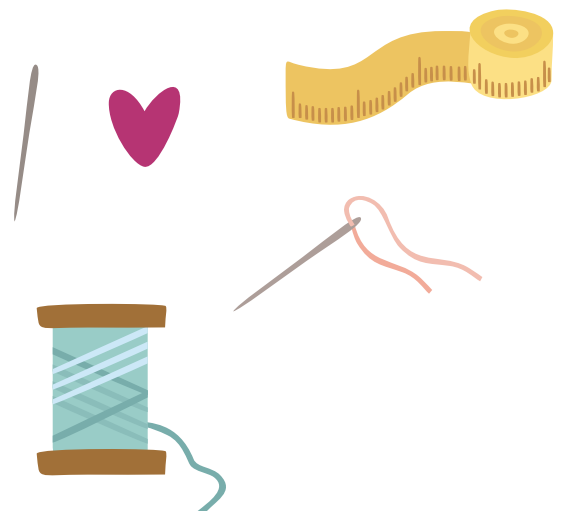
---

- 1701**      **Funky Woollen Bag**  
Liz Moynahan
- 1702**      **Mystical Mandala**  
Julie Clemett
- 1703**      **3D Floral Portrait in Stitch and Collage**  
Chris McGuigan
- 1704**      **Introduction to Cartonnage**  
Tracey Miles
- 1705**      **Magic Cube**  
Jill Wilson
- 1706**      **Apron (Repurposed Tablecloth)**  
Ros McCarthy
- 1707**      **A Secret Garden**  
Glenys Fry
- 1708**      **Windows**  
Dana Pratt

[General Information](#)

[Programme](#)

[Registration Form](#)



## Funky Woollen Bag



Would you like to make a funky bag with recycled pure woollen blanketing, and embellished with dyed blanket pieces, surface stitches, beads etc?

This is a fun, no stress class, with lots of options for individuality. A wide variety of stitches are used to applique your flowers and stems. A knowledge of basic hand applique stitches would be an advantage.

The comprehensive kit will provide you with everything needed to make the bag. While the bag will not be finished in class, full instructions will be provided in the kit for you to complete at home. A demonstration of the finishing process will be given.

**Design Size:** 43 x 25 cm

**Class Level:** Suits all levels

**Kit Cost:** \$50

### Tutor Profile

Liz began her embroidery journey as a child under the watchful eye of her mother and grandmother. Enjoying most forms of traditional embroidery, Liz has always been drawn to contemporary work. Playing with various textures, stitches, fabrics and threads, and where there are no rules is her happy place.

When Liz joined the Nelson Embroidery Guild, she found she was in embroidery heaven. The Guild encouraged her to develop her ideas and to stitch 'outside the square' – an example of her work was on the front cover of *Threads* (October 2005). Now living in Rawene, Liz enjoys teaching a variety of classes to like-minded women.

## Mystical Mandala

A bit of sparkly fun, these mandala incorporate many of the materials used in traditional Indian embroidery: glass jewels, small mirrors, vibrant metal threads and bright coloured fabrics.

Each mandala starts with a brightly coloured felt base, then highlighted with many concentrically based patterns of embellishments, the repeating nature of the pattern a feature of mandala.

Techniques covered will include working with various types of metal threads, chains, applying jewels and mirrors, and mounting a circular embroidery.

**Design Size:** 13.5 cm diameter

**Class Level:** Intermediate

**Kit Cost:** \$65 (Julie will contact students directly for design and colour choice)

### Tutor Profile

Julie began embroidery at an early age taught by her mother and grandmother and inspired household items made by her great-grandmothers. She considers herself a 'collector of techniques', and loves learning the intricacies of many different techniques and styles of embroidery. She enjoys passing on this learning, and helping students develop their own talents.



1703 | Chris McGuigan

## 3D Floral Portrait in Stitch and Collage

In this class students will create a 3D floral textile portrait using embroidery and collage. This will involve the following techniques: fabric collage, applique, hand and machine embroidery, thermofax screen printing and thread dyeing.

You will be required to bring your own sewing machine (in good working order, tagged and tested) and need to know how to lower the feed dog. Students need to bring a sense of adventure and a willingness to experience the joy of experimentation.

Once completed this piece can be framed or edge finished to be displayed on a wall.



**Design Size:** 34 x 40 cm

**Class Level:** Intermediate  
(understanding of machine sewing and hand embroidery)

**Kit Cost:** \$30

### Tutor Profile

Described as an 'improvisational, modern stitcher', textiles and mixed media are her 'why'.

Having a healthy supply of fabrics, thread and art supply treasures at her fingertips, allows Chris to dream, create, then teach the cool things she loves. "Come and see for yourself how fun stitching and collage can be" says Chris.

1704 | Tracey Miles

## Introduction to Cartonnage



Come and learn the basic techniques used in constructing a variety of boxes and cover them with that beautiful fabric you've had in your stash just waiting for the perfect project to use it on.

The comprehensive kit uses 100% recycled grey board and has everything you need to complete your project (fabric excluded).

**Design Size:** 21 x 14 x 9 cm

**Class Level:** Suits all levels

**Kit Cost:** \$50

### Tutor Profile

Tracey came out of retirement from nursing to help with the Covid vaccination roll-out in Hanmer Springs and has stayed on as a Practice Nurse. Tracey first learnt about Cartonnage when she was living in France. She fell in love with its sustainability, use of recycled and biodegradable materials, to say nothing of the opportunity to use some of the beautiful fabrics in her stash.



1705 | Jill Wilson

## Magic Cubes



There will be three options for this workshop – Christmas theme (counted); Whitework (counted – which can also be stitched in colour) and Bees, Beasties and Blooms (surface stitch).

There are 48 different designs in each set of cubes which can seem quite daunting, but each one is a bite sized piece and can be finished quite quickly. Each square measures 5 x 5 cm. Once all 8 cubes are finished they are joined in a particular order to enable them to twist and turn, and intrigue and mesmerize those who pick them up for a play.

Pre tacking is required prior to class.



**Design Size:** 20 x 10 x 5 cm  
(when the cubes are sitting flat)

**Class Level:** Suits all levels

### Tutor Profile

Jill has been embroidering and quilting since the mid 1980's and has been tutoring for the last 8 years. She is always thinking of ideas for her next projects and finds that many of her ideas are three dimensional and involve construction. Jill has a passion for using pattern and colour to create pieces of embroidery, whether it be in counted work or surface stitching, and likes to share that passion with others.



1706 | Ros McCarthy

## Apron (Repurposed Tablecloth)

This class will see a repurposed tablecloth turned into an apron that you can wear to a future class or an embroidery workday. The large pocket allows you to keep what you are using in class close by. It is a great opportunity to use those threads that you love but had no purpose for when you bought them!

Tablecloths with the design already printed on can be purchased from second hand shops; you can even use one that has been partially stitched by its' previous owner. If you are unable to find a suitable tablecloth, you could choose a fabric (cotton duck or similar) and copy your own design onto it.

A variety of stitches can be used including stem stitch, buttonhole stitch, chain stitch, leaf stitch, satin stitch, drizzle stitch, back stitch and cast on buttonhole stitch. This project can be as simple or as complicated as you choose.

**Class Level:** Suits all levels

### Tutor Profile

Ros has been stitching since she was a child – her favourite school subject was embroidery. Interested in a wide variety of stitching techniques, she is most passionate about surface stitchery and the use of colour and texture in embroidery. Ros enjoys sharing her extensive knowledge and watching people master different techniques.



1707 | Glenys Fry

## The Secret Garden



The aim of this class is to help people look at their stash of threads and fabric and to create an original piece of work with assistance. We will look at ways of interpreting design into stitch, colour choice and creating a balanced design.

Tracing of stylised floral motifs and the use of stamps will also be part of the design. Line stitches will make up the bulk of the stitching eg. stem stitch, split stitch and chain stitch.

Students can decide on their own end use for the piece. Instructions will be given to make a rice bag, however it could be made into a cushion, bag pocket or framed as desired.

**Design Size:** Rice bag: 20 cm square/15 cm high; Cushion: 40 cm square

**Class Level:** Suits all levels

### Tutor Profile

Glenys has been stitching for many years and has tried most techniques. Glenys enjoys designing her own work and exercising a level of creativity in the way traditional techniques can be used. Currently a member of the Marlborough Guild, Glenys has been a regular tutor within her Guild and at WAW.

1708 | Dana Pratt

## Windows

This piece was inspired from a stay in a castle in Wales that was festooned with wisteria.

Students will be provided with two moulded window frames ready for painting. The inside and outside fabric castle walls will be painted and then embroidered randomly. You may wish to make two outside scenes or design your own knot garden.

**Design Size:** 15 x 17 cm

**Class Level:** Suits all levels  
(confident beginner)

**Kit Cost:** \$8



### Tutor Profile

Dana has enjoyed immersing herself in a variety of textile arts and crafts for many years. She has previously taught classes in fabric dyeing, machine and hand embroidery. Attending many wonderful workshops on different subjects and media, Dana has continued to develop her craft.

# General Information

---

## Location of WAW

All classes are held at Waimea College,  
60 Salisbury Rd, Richmond.

- The Merchants Mall, morning tea / lunch and displays of work will all be held at **R block**.

## Catherine Dunkley Memorial Award

- Please bring a piece of your finished works of WAW pieces from previous years. The winner for this award is selected by Viewers' Choice.

## General Display

- Please bring a piece of your work for the display. Be sure your name and the technique is attached.
- All embroideries will be all care and no responsibility and must be collected by 1:30pm Sunday.

## Morning Tea & Lunches

- Tea and coffee will be available at morning tea and lunch.
- Participants need to bring their own lunch and snacks.  
***Please don't forget your cup, clearly labelled!***

## Class Requirements

- A list of requirements will be sent to each participant along with confirmation of your class.
- The cost of the kit or notes is in the brochure. Payment in cash should be given to the tutor on the first day in a named envelope.

## Sewing supplies

- Please bring your usual stitching kit – scissors, needles, thimble, pincushion, frames, glasses etc.
- A small notebook and a pencil to make notes may be helpful.

## Helpful Hints

- Please provide your own bottled water.
- Bring any home comforts like a cushion, footstool or light.
- A small cloth or tea-towel to protect your work from the school desktops is advisable.

## Visiting other classes

- There are to be **no** visits during class times.
- Lunch times are the appropriate time for this.

## Mobile phones

- As a courtesy to tutors and fellow students all mobile phones should be switched **off** during class.

## Raffles

- Don't forget your raffle money as there will be a wonderful array of prizes.

# Programme

---

## Saturday 23 and Sunday 24 September

<b>Classes:</b>	9:00 am to Noon and 1:30 to 3:30 pm
<b>Merchants:</b>	Saturday 8:30 am – 5:00 pm; Sunday 8:30 am – 1:30 pm
<b>Registration:</b>	Upon arrival in your class on Saturday

---

## Expectations

It is sometimes difficult to choose a class. If you are not sure if a class is suitable for your experience, please consult another member of your Guild or contact one of us:

Carol Barker	027 270 6657
Josie Macdonald	021 0255 2383
Christine Weldon	03 545 1714 or 022 649 8582

### Registration

There are two ways to register:

1. Online at [nelsonembroiderersguild.co.nz](http://nelsonembroiderersguild.co.nz)
2. Email or post registration form

All registrations are processed on receipt of registration form with payment in full by internet banking.

### Cancellations

- Cancellations received before 1 September will be subject to a \$10 administrative fee.
- **Fees will not be refunded on cancellations received after 1 September.**

## Accommodation and Meals

- WAW participants are to arrange their own accommodation and meals.

## Evaluation Forms

- An Evaluation Form will be given out on Sunday. Please return these to your class monitor. We value your input.

## Copyright

- Participants are reminded that each tutor's work has copyright and must not be passed on without the tutor's permission.

## Disclaimer

- If unforeseen circumstances occur the What a Weekend Committee reserves the right to cancel the event.



# Registration Form

Registration form to be completed online **OR** posted / emailed to The Registrar by 1st August.

Posted or emailed registrations must be on this form – Please keep a copy for your own records.

The Registrar: Carol Barker  
Villa 163  
1 Hill St North  
Richmond 7020

Email: carolbee@xtra.co.nz  
Mobile: 027 270 6657

#### Checklist:

- List all class choices
- Payment by internet banking
- Send registration form

## 1. Your details

Name: \_\_\_\_\_

Postal Address: \_\_\_\_\_

Cancellations received before  
1 September 2023 will be  
subject to a fee of \$10.00

**Fees will not be refunded on  
cancellations received after  
1 September 2023**

Postcode: \_\_\_\_\_

Telephone: \_\_\_\_\_ Mobile: \_\_\_\_\_

Email: \_\_\_\_\_

## 2. Class Selection

\_\_\_\_\_

1st

\_\_\_\_\_

2nd

\_\_\_\_\_

3rd

## 3. Payment

Class Fees: All classes \$120

Deposit in Westpac bank account: NEG WAW 03 0751 0347793 00

Use your full name then '1st Choice'  
number as the reference.

For example:

Jane

Particulars

Smith

Code

1502

Reference

**Registrations to be in by 1 August 2023**